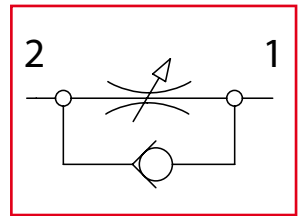




STU-BSP

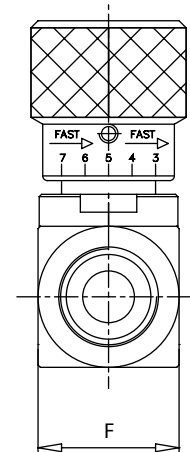
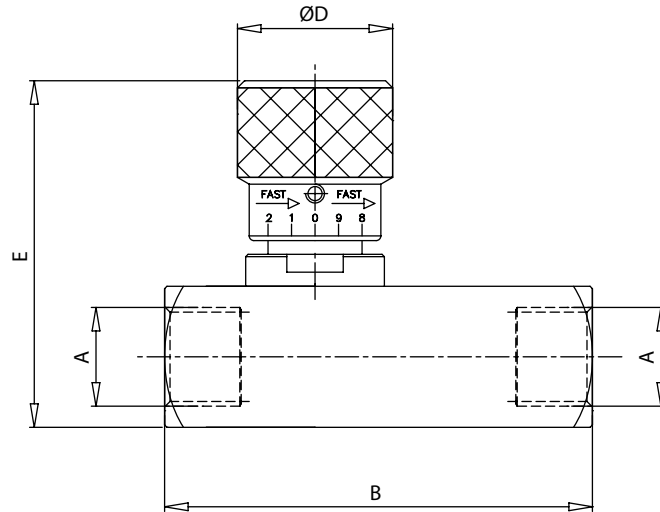
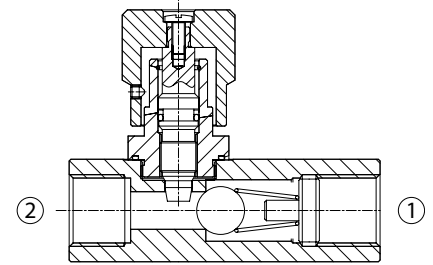
Valvole di controllo flusso unidirezionali
Unidirectional flow control valves



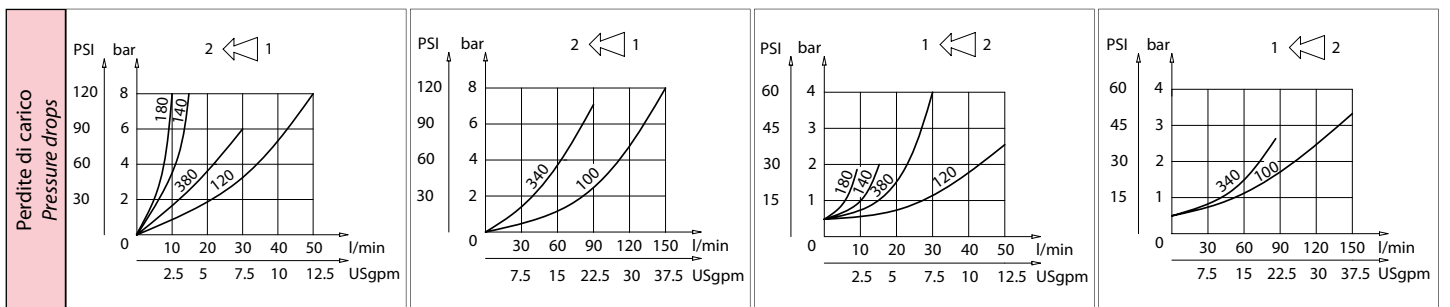
LEHENGOK, S. P.A.



Dati tecnici Technical data	
Viscosità fluido Fluid viscosity	10-500 mm ² /s 45 to 2000 ssu (6 to 420 cSt)
Classe di contaminazione Filtration	ISO code 16/13 SAE class 4 or better
Temperatura fluido Fluid temperature	-20°C +80°C -4°F +176°F
Temperatura ambiente Ambient temperature	-20°C +50°C -4°F +122°F



mm
(Inches)



Caratteristiche tecniche Technical performances								
Codice Code	A	Portata Max Max flow l/min - USgpm	Pressione Max Max pressure bar/PSI	B	D	E	F	Peso approssimativo Approx weight Kg/lb
STU180	BSPP 1/8	10 (2.5)	400 (5800)	59 (2.32)	20 (0.79)	53 (2.08)	20 (0.79)	0,20 (0.45)
STU140	BSPP 1/4	15 (4)		66 (2.60)	30 (1.18)	68 (2.68)	25 (0.98)	0,34 (0.75)
STU380	BSPP 3/8	30 (8)		77 (3.03)	91 (3.58)	33 (1.30)	72 (2.83)	0,36 (0.80)
STU120	BSPP 1/2	50 (13)		91 (3.58)	33 (1.30)	72 (2.83)	30 (1.18)	0,60 (1.3)
STU340	BSPP 3/4	80 (20)		112,5 (4.43)	42 (1.65)	94 (3.70)	40 (1.57)	1,33 (3)
STU100	BSPP 1	150 (40)		141 (5.55)	42 (1.65)	99 (3.90)	45 (1.77)	1,9 (4.2)

Codice ordinazione Ordering code	
STU-X	
X	Dimensione / Size
180	BSPP 1/8
140	BSPP 1/4
380	BSPP 3/8
120	BSPP 1/2
340	BSPP 3/4
100	BSPP 1